

PPL Antibody (C-term)
Affinity Purified Rabbit Polyclonal Antibody (Pab)
Catalog # AP14171b

Specification

PPL Antibody (C-term) - Product Information

Application	IHC-P, WB,E
Primary Accession	O60437
Other Accession	NP_002696.3
Reactivity	Human
Host	Rabbit
Clonality	Polyclonal
Isotype	Rabbit IgG
Calculated MW	204747
Antigen Region	1301-1330

PPL Antibody (C-term) - Additional Information

Gene ID 5493

Other Names

Periplakin, 190 kDa paraneoplastic pemphigus antigen, 195 kDa cornified envelope precursor protein, PPL, KIAA0568

Target/Specificity

This PPL antibody is generated from rabbits immunized with a KLH conjugated synthetic peptide between 1301-1330 amino acids from the C-terminal region of human PPL.

Dilution

IHC-P~~1:10~50

WB~~1:1000

E~~Use at an assay dependent concentration.

Format

Purified polyclonal antibody supplied in PBS with 0.09% (W/V) sodium azide. This antibody is purified through a protein A column, followed by peptide affinity purification.

Storage

Maintain refrigerated at 2-8°C for up to 2 weeks. For long term storage store at -20°C in small aliquots to prevent freeze-thaw cycles.

Precautions

PPL Antibody (C-term) is for research use only and not for use in diagnostic or therapeutic procedures.

PPL Antibody (C-term) - Protein Information

Name PPL

Synonyms KIAA0568

Function Component of the cornified envelope of keratinocytes. May link the cornified envelope to desmosomes and intermediate filaments. May act as a localization signal in PKB/AKT-mediated signaling.

Cellular Location

Cell junction, desmosome. Cytoplasm, cytoskeleton. Cell membrane
{ECO:0000250|UniProtKB:Q9R269}. Cytoplasm {ECO:0000250|UniProtKB:Q9R269}

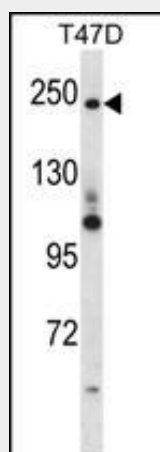
Tissue Location

Expressed in stratified squamous epithelia and in some other epithelia.

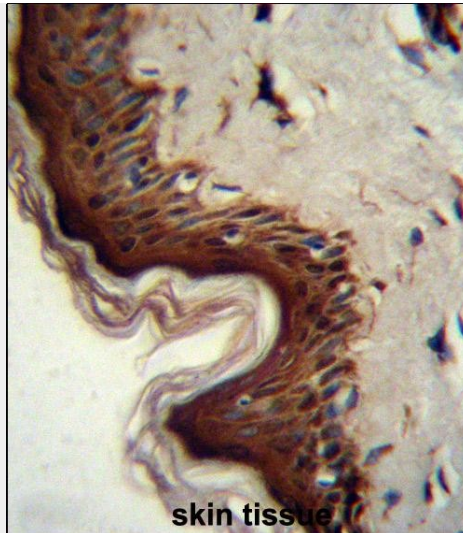
PPL Antibody (C-term) - Protocols

Provided below are standard protocols that you may find useful for product applications.

- [Western Blot](#)
- [Blocking Peptides](#)
- [Dot Blot](#)
- [Immunohistochemistry](#)
- [Immunofluorescence](#)
- [Immunoprecipitation](#)
- [Flow Cytometry](#)
- [Cell Culture](#)

PPL Antibody (C-term) - Images

PPL Antibody (C-term) (Cat. #AP14171b) western blot analysis in T47D cell line lysates (35ug/lane). This demonstrates the PPL antibody detected the PPL protein (arrow).



PPL Antibody (C-term) (Cat. #AP14171b) immunohistochemistry analysis in formalin fixed and paraffin embedded human skin tissue followed by peroxidase conjugation of the secondary antibody and DAB staining. This data demonstrates the use of PPL Antibody (C-term) for immunohistochemistry. Clinical relevance has not been evaluated.

PPL Antibody (C-term) - Background

The protein encoded by this gene is a component of desmosomes and of the epidermal cornified envelope in keratinocytes. The N-terminal domain of this protein interacts with the plasma membrane and its C-terminus interacts with intermediate filaments. Through its rod domain, this protein forms complexes with envoplakin. This protein may serve as a link between the cornified envelope and desmosomes as well as intermediate filaments. AKT1/PKB, a protein kinase mediating a variety of cell growth and survival signaling processes, is reported to interact with this protein, suggesting a possible role for this protein as a localization signal in AKT1-mediated signaling. [provided by RefSeq].

PPL Antibody (C-term) - References

Pinheiro, A.P., et al. Am. J. Med. Genet. B Neuropsychiatr. Genet. 153B (5), 1070-1080 (2010) :
Rose, J.E., et al. Mol. Med. 16 (7-8), 247-253 (2010) :
Pyle, A.L., et al. Cardiovasc. Pathol. 19 (2), E13-E20 (2010) :
Huang, Y., et al. Arch. Dermatol. Res. 301(10):703-709(2009)
Boczonadi, V., et al. Exp. Cell Res. 313(16):3579-3591(2007)